

SUSTAINABILITY TOUR: BIODIVERSITY

POLLINATOR-FRIENDLY PLANTS

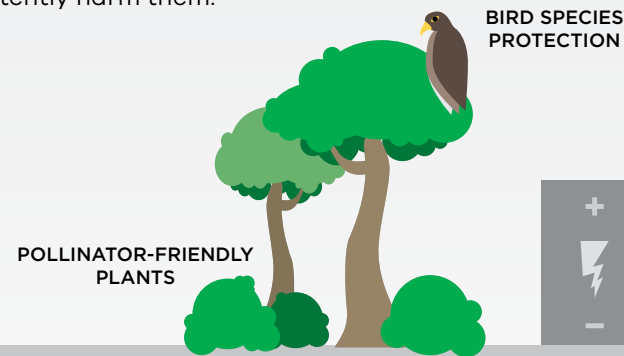
All new landscape is required to include at least two plant types, which otherwise meet our reduced water requirements, that are considered Pollinators by The Pollinator Partnership (www.pollinator.org). A list of the pollinators used on our development projects can be found on page 68. We have no operational sites owned, leased, managed in, or adjacent to, protected areas or areas of high biodiversity value outside protected areas.

BEEHIVES

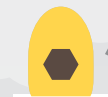
We helped our tenant Neuhouse install a beehive in their space at Columbia Square in Hollywood. Any beehives discovered in undesirable locations are to be relocated either on or offsite in partnership with local beekeeping organizations rather than destroyed.

BIRD SPECIES PROTECTION

We use a falcon to mitigate an unwanted pigeon issue in a more humane way as opposed to the use of spike-based bird deterrents on certain properties. Our falconer helps us identify protected bird species on these sites so that we do not inadvertently harm them.



BEEHIVE



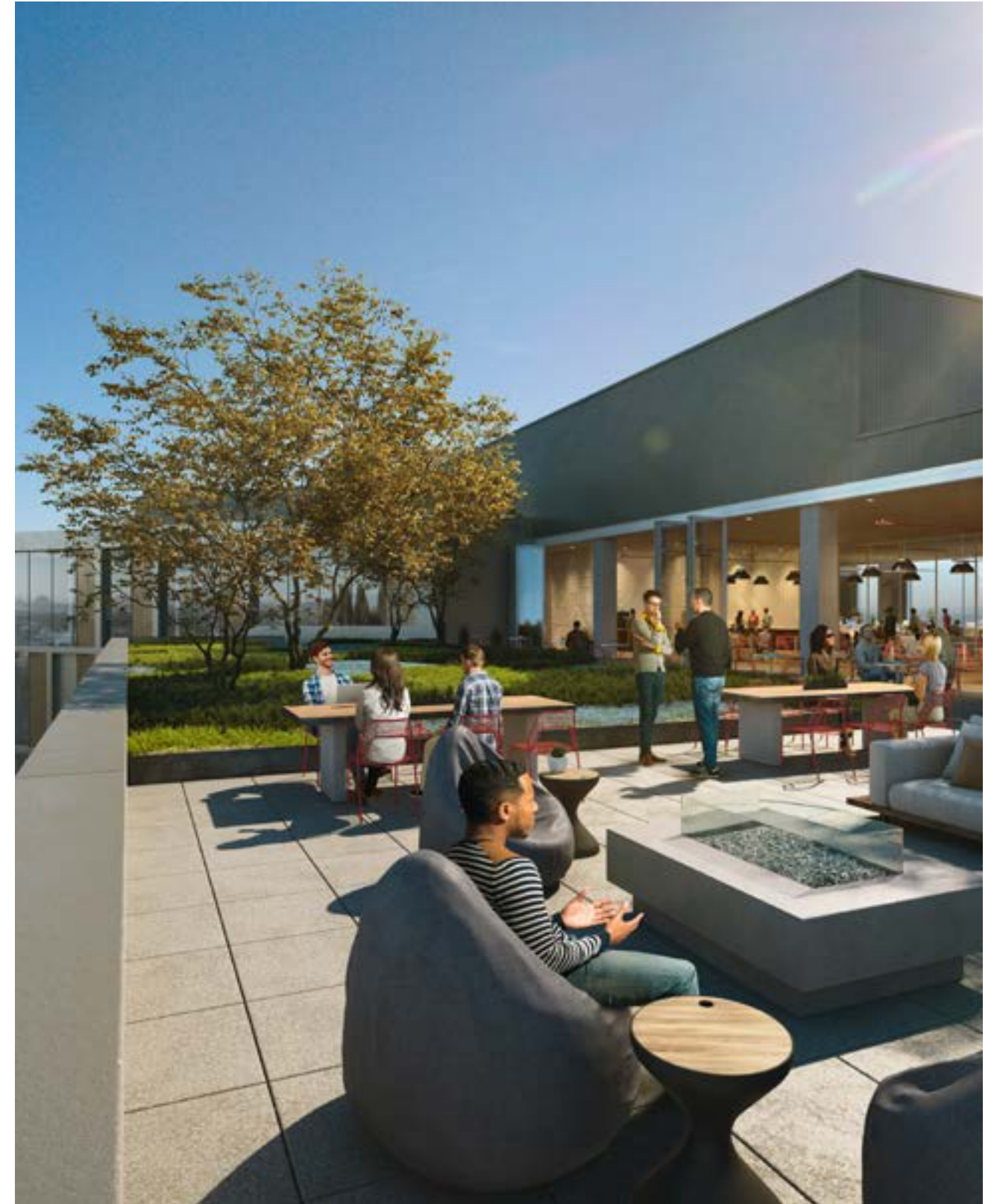
POLLINATOR-FRIENDLY PLANTS



POLLINATORS IN THE KRC DEVELOPMENT PORTFOLIO

TYPE	METHOD	
100 Hooper	California Poppy (<i>Eschscholzia californica</i>)* Blue Thimble Flower (<i>Gilia capitata</i>)* Cleveland's Sage (<i>Salvia clevelandii</i>)* Milkweed (<i>Asclepias fascicularis</i>)* Eastern Redbud (<i>Cercis canadensis</i>)	Yarrow (<i>Achillea millefolium</i>)* Showy Penstemon (<i>Penstemon spectabilis</i>)* Purple Cone Flower (<i>Echinacea purpurea</i>) Manzanita (<i>Arctostaphylos bakeri</i>)*
9455 Towne Centre Dr	Yarrow (<i>Achillea millefolium</i>)* Lion's Tale (<i>Agave attenuata</i>) Manzanita (<i>Arctostaphylos bakeri</i>)* California Lilac (<i>Ceanothus</i>)*	Douglas Iris (<i>Iris douglasiana</i>)* Lemonade Sumac (<i>Rhus integrifolia</i>)* Fragrant Sage (<i>Salvia clevelandii</i>)*
On Vine	California Buckley (<i>Aesculus californica</i>)* Kinnikinnick (<i>Arctostaphylos uva-ursi</i>)* California Buckwheat (<i>Eriogonum fasciculatum</i>)*	Beach strawberry (<i>Fragaria chiloensis</i>)* Monkey Flower (<i>Mimulus</i>)
333 Dexter	Yarrow (<i>Achillea millefolium</i>)*	Douglas Iris (<i>Iris douglasiana</i>)*
Exchange	Manzanita (<i>Arctostaphylos bakeri</i>)* Sweetshrub (<i>Calycanthus occidentalis</i>)* California Fuschia (<i>Epilobium canum</i>)* Buckwheat (<i>Eriogonum arborescens</i>)* Seaside Buckwheat (<i>Eriogonum latifolium</i>)*	Alumroot (<i>Heuchera sp.</i>)* Lupine (<i>Lupinus sp.</i>)* California Hummingbird Sage (<i>Salvia spathacea</i>)*
2100 Kettner	Blue Chalk Sticks (<i>Senecio mandraliscae</i>)* Madagascar Senecio (<i>Senecio decaryi</i>)*	Stonecrop (<i>Sedum</i>) Sage (<i>Salvia spathacea</i>)*
Kilroy Oyster Point	Rosaly Checker (<i>Sidalcea malviflora</i>) Yarrow (<i>Achillea millefolium</i>)* Scarlet Monkeyflower (<i>Mimulus cardinalis</i>)* Tansy Phacelia (<i>Phacelia tanacetifolia</i>)*	Western Vervain (<i>Verbena lasiostachys</i>)* Rosilla (<i>Helenium puberulum</i>)* Red Willow (<i>Salix laevigata</i>)* California Buckeye (<i>Aesculus californica</i>)*

*Native



ROOF DECK - 9455 TOWNE CENTRE, SAN DIEGO, CA // TARGETING LEED PLATINUM